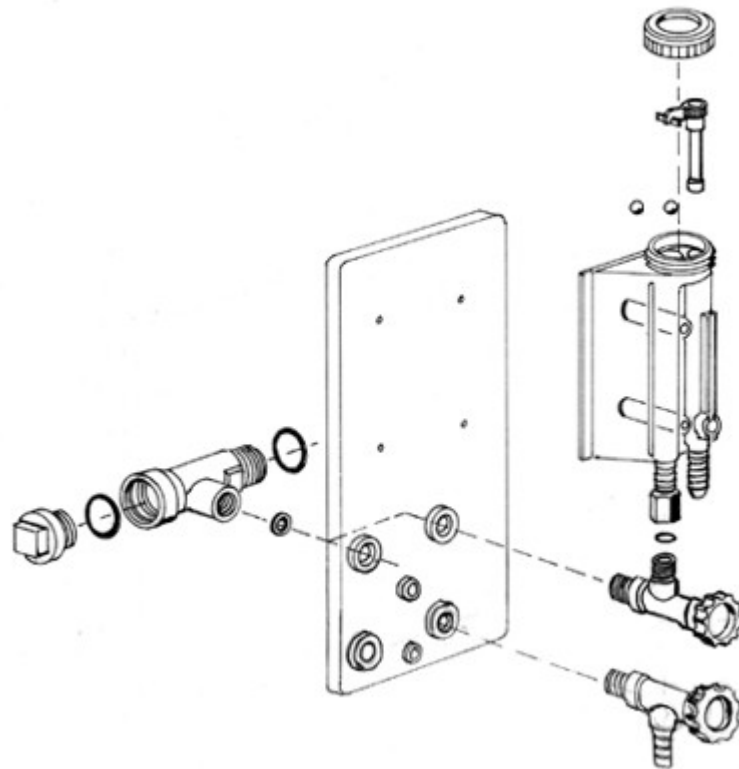


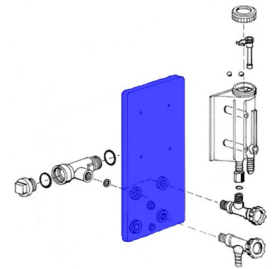
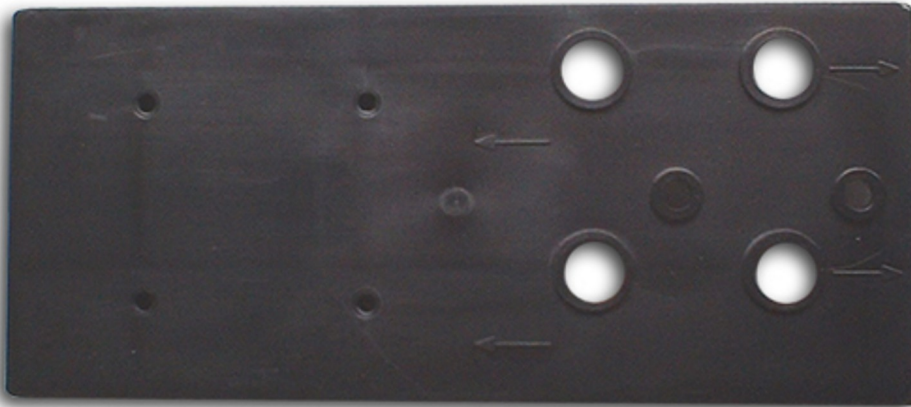


## Ersatzteilliste

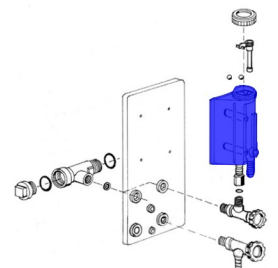
### Typ 500 und Typ 2000



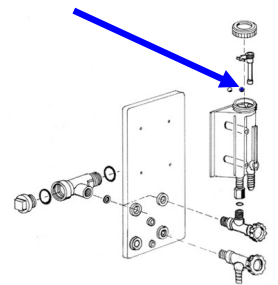
## Nr.1 - Montageplatte (Typ 500 & 2000)



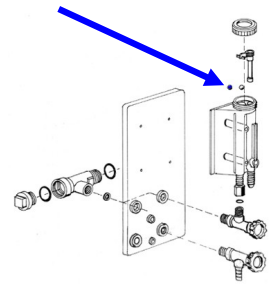
## Nr.2 - Messgehäuse (Typ 500 & 2000)



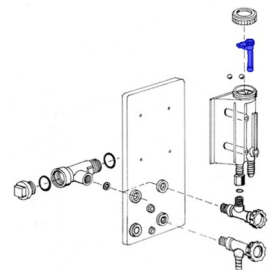
## Nr.3 - VA-Stahlkugel (Typ 500 & 2000)



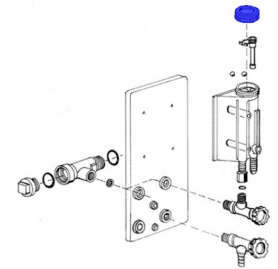
## Nr.4 - Hostaformkugel (Typ 500 & 2000)



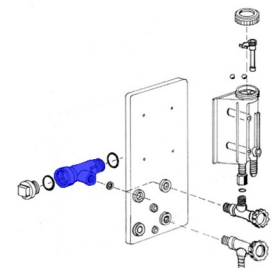
## Nr.5 - Drehflügeleinsatz (Typ 500 & 2000)



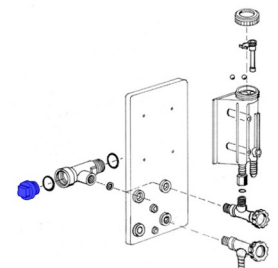
## Nr.6 - Gehäusedeckel (Typ 500 & 2000)



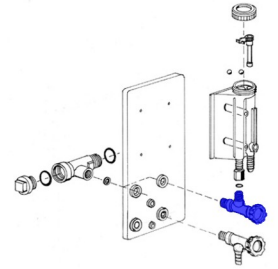
## Nr.7 - Fitting (Typ 500 & 2000)



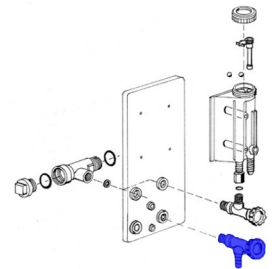
## Nr.8 - Endstopfen (bei Typ 2000 Abschlusskappe)



## Nr.9 - Ventil mit Gehäuseanschluss (Typ 500 & 2000)



## Nr.10 - Ventil mit Schlauchanschluss (Typ 500 & 2000)



## Nr.11 - Zylinderbürste (Typ 500 & 2000)



## Filtereinsätze (Typ 500 & 2000)



## Winkelschlauchtülle Ø 12 mm (Typ 500 & 2000)



## Winkelschlauchtülle Ø 19 mm (Typ 500 & 2000)

